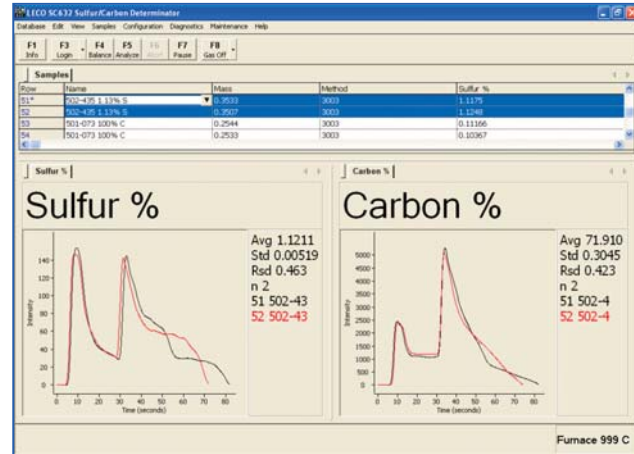
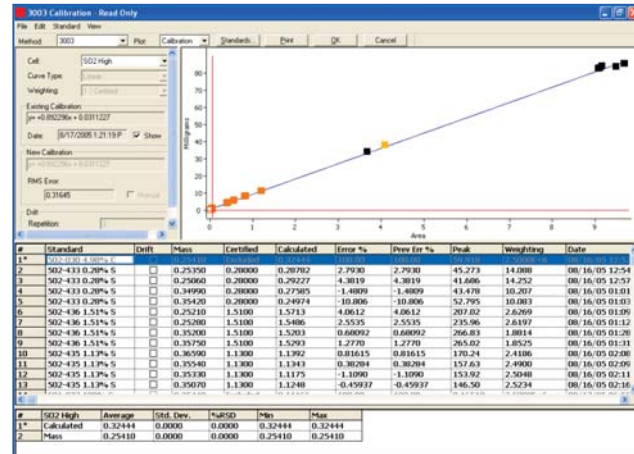


**Easy-To-Use Windows®-Based Operating Software**

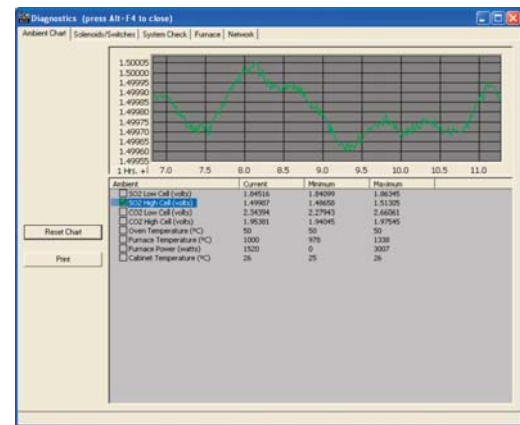
Featuring unlimited storage space and compatibility with various Laboratory Information Management Systems (LIMS), this software is designed for seamless interaction with any operator or customer environment. A convenient on-board help manual allows you to quickly access information without leaving your instrument.



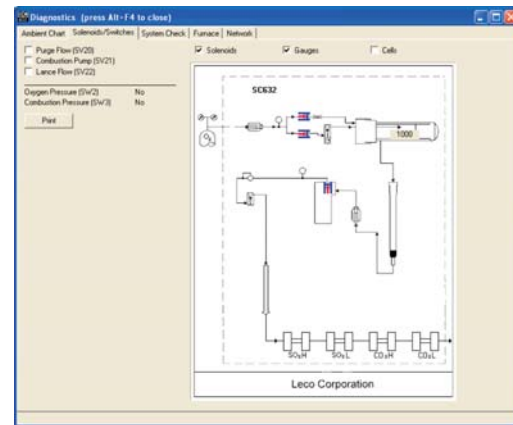
Manage data and graphs seamlessly.



Perform simple calibrations and drift connections.



Monitor internal components during analysis.



Expanded interactive diagnostic screens help you troubleshoot problems faster and easier.



**LECO—Your source for total analytical solutions**



**TGA701 Thermogravimetric Analyzer**



**AC500 Calorimeter**

**LECO Corporation**  
 3000 Lakeview Avenue • St. Joseph, MI 49085-2396 • Phone: 800-292-6141 • Fax: 269-982-8977  
 info@leco.com • www.leco.com • ISO-9001:2000 • No. FM 24045 • LECO is a registered trademark of LECO Corporation.



**LECO®**  
**SC632 Sulfur/Carbon Series**

# SC632 Sulfur/Carbon Series

This state-of-the-art instrument offers you an ASTM-approved technique for determining sulfur and carbon simultaneously or individually using direct combustion/infrared detection. A variety of models allow you to perform sulfur, carbon, or sulfur/carbon analysis quickly and effortlessly for many applications—including coal, coke, cement, soil, and fuel oil. A small footprint, external PC with improved operational controls, automation capabilities, and increased instrument robustness are all a part of the SC632-Series' advanced design.

## SC632-Series Advantages

**A variety of features have been implemented into the instrument design to answer the needs of our customers.**

- Exclusive ECLIPSE® architecture—a unique design by LECO that improves reliability and servicability
- Improved plumbing—streamlined and efficient for faster maintenance of flow path
- Accessible components—easily accessible to the operator thanks to ergonomically designed shells
- Autoloader Capabilities—an optional autoloader increases your throughput and provides added convenience

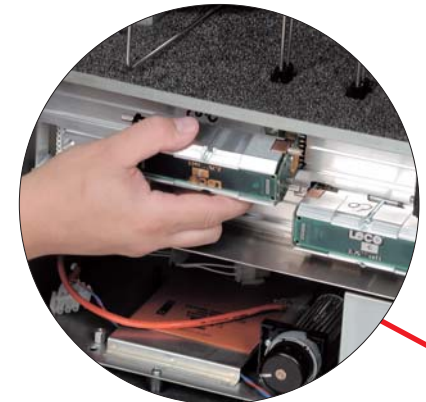
### Additional Software Features

- Blank and drift correction features
- Ethernet LAN protocol
- Expanded service diagnostics, including compatibility to **SmartLine®** Remote Diagnostics

## Available Configurations

- SC632—Sulfur/Carbon Determinator
  - S632—Sulfur-only Determinator
  - C632—Carbon-only Determinator
- All configurations available with optional autoloader.*

**Flexible Elemental Ranges with IR Cells**  
The IR Cell design minimizes maintenance and expands operator flexibility. New IR Cells offer a longer emitter life, low cross-talk between elements, and wide-dynamic ranges.



**Easy-to-Use Windows®-Based Environment**  
The SC632-Series is controlled by an external PC with Windows®-based operating system featuring 21 CFR Part 11 compliance.

**High-Endurance Six-Element Heating Furnace**  
This new design improves robustness, while minimizing downtime and operator costs. The six heating elements, each with a size of 5/8 in. (1.6 cm), have improved strength and power-load capacity, resulting in a more durable furnace that requires less maintenance—saving you valuable time and money.



**Combustion Tube with Lance**  
The addition of a lance within the combustion tube further reduces the analysis time of the SC632-Series. The lance tube allows incoming oxygen to be forced directly onto the sample, rather than slowly filling the combustion tube. By focusing the oxygen flow where it is most needed, the speed of combustion is increased.



**Optional Autoloader**  
A 50-sample autoloader provides seamless automation for improved walk-away time and minimal maintenance. A perfect solution for high-throughput laboratories requiring unattended analyses. For more information, request specification sheet 209-171-004.



**Sample Introduction and Maintenance**  
The new extended-life anhydrous tube is positioned behind an ergonomically designed casting. Various sample types are manually entered into the combustion tube.