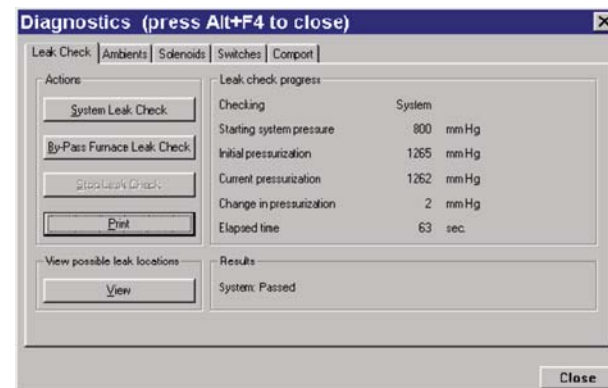
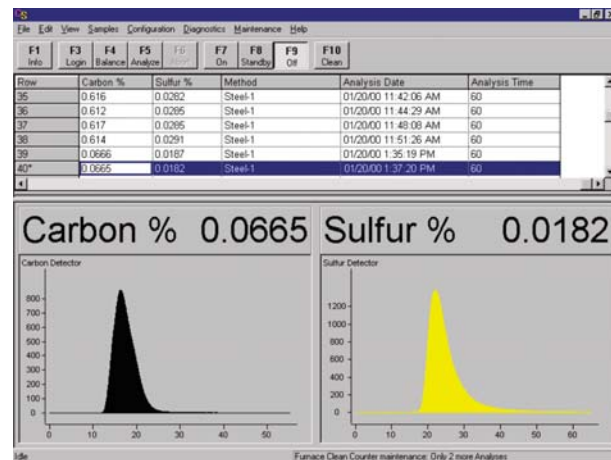
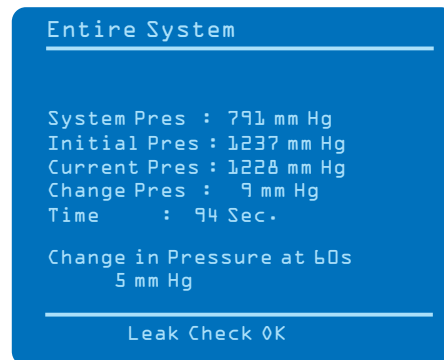
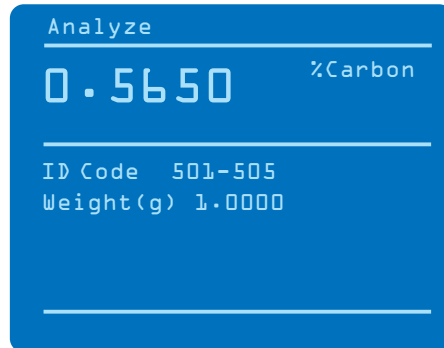


DSP or Windows®-Based Control

The standard DSP software package includes complete on-board diagnostics, alphanumeric entry, and statistical reporting capabilities. As your needs change, you can simply upgrade your instrument to Windows®-based control. This familiar software platform combines easy-to-use program features with advanced database capabilities.



Custom-designed software for DSP (top) and Windows® (bottom) allows access to previously defined ID codes through the sample log-in and analysis screen.

On-board diagnostics ensure minimum downtime. Free service training classes enhance your operator's capabilities.



LECO—Your source for total analytical solutions.

TCH600 Nitrogen/
Oxygen/Hydrogen
Determinator



CS600
Carbon/Sulfur
Determinator



3000 Lakeview Avenue • St. Joseph, MI 49085-2396 • Phone: 800-292-6141 • Fax: 269-982-8977
info@leco.com • www.leco.com • ISO-9001:2000 • No. FM 24045 • LECO is a registered trademark of LECO Corporation.

LECO[®]
Delivering the Right Results

© 2005 LECO Corporation

Form No. 209-173

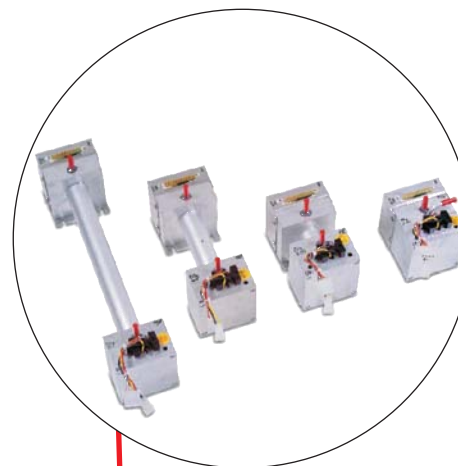
R2.59-REVO

LECO[®]
CS230 Carbon/Sulfur Series

CS230 Carbon/Sulfur Series

Since 1936 LECO has remained the authority in rapid elemental determination by combustion/fusion. Today our field-tested instrumentation features the latest technology and conveniences that have made LECO synonymous with elemental determination in metals.

The LECO CS230 Series is ideal for the smaller, lower-volume laboratory looking for a cost-effective solution without sacrificing precision, reliability, and accuracy. Add the optional Windows®-based software and fully automatic autoloader to expand usability even further for higher-volume laboratories. Each instrument can be configured to meet your individual lab needs including carbon-only, sulfur-only, high-carbon/sulfur, low-carbon/sulfur, and high-sulfur determination.



Easily Upgradable

With the unique ability to change infrared (IR) cell configurations, the CS230 Series is available with high and low cell range options. Carbon-only and sulfur-only models can be easily upgraded to dual carbon/sulfur determination.

230-Series

CS230 Carbon/Sulfur Determinator

Not every lab requires high-end, multi-element detection instrumentation. For dependable accuracy and precision, combined with upgrade flexibility for carbon and sulfur results, LECO recommends the CS230. This instrument effectively covers ranges from ppm to high-weight % levels for both carbon and sulfur. For more information request Specification Sheet 209-173-001.

C230 Carbon Determinator

LECO's most basic carbon-only determinator for steel, cast iron, ferroalloys, and nonferrous metals. Results are available in as little as 45 seconds. For more information request Specification Sheet 209-173-002.

S230 Sulfur Determinator

For accurate sulfur-only determination, choose the S230 Series. Measurement by solid-state infrared absorption is complete in less than one minute. For more information request Specification Sheet 209-173-003.

Standard Features

- Automatic leak check and barometric pressure control
- Powerful 18 MHz, 2.2 kW furnace
- Simultaneous carbon/sulfur calibration; blank calculation for each cell and method
- Cleaning counters for reagent changes
- System set-up and checks
- Easy accessibility to calibration, linearization, blank factors, and analysis data
- Approved, recommended method of analysis

Applications

230-Series instruments can easily handle most sample forms including solid pieces, powders, millings, and chips.

Carbides	Ferro Alloys
Catalysts	Refractory Metals
Cast Iron	Steels
Ceramics/Sands/Glass	Mold Powders
Copper Alloys/Brass	Lime/Limestone/Ores
Aluminum Alloys	Inorganic Materials

Typical Results

Instrument	Sample		% Carbon	% Sulfur
CS230	White Iron	Avg.	3.33	0.0150
	NIST 338	Std. Dev.	0.004	0.0006
	3.33% C	RSD	0.12	4.00
	0.015% S			
	Stainless Steel	Avg.	0.311	0.0354
C230	NIST 73C	Std. Dev.	0.001	0.0003
	0.310% C	RSD	0.39	0.73
	0.036% S			
	Sand	Avg.	0.0309	—
		Std. Dev.	0.0009	—
S230		RSD	2.9	—
	Tool Steel	Avg.	0.720	—
	NIST 50C	Std. Dev.	0.0014	—
	0.719% C	RSD	0.20	—
	Fly Ash	Avg.	—	0.154
	NIST 2690	Std. Dev.	—	0.0006
	0.15% S	RSD	—	0.39
	Clay	Avg.	—	0.0062
		Std. Dev.	—	0.0002
		RSD	—	3.22



CS230 Carbon/Sulfur Determinator

Shown above with optional Windows®-based software. DSP version (left) is standard.



Sample Autoloader

Optional 20-position carousel with integrated crucible load/unload (Windows® version only)