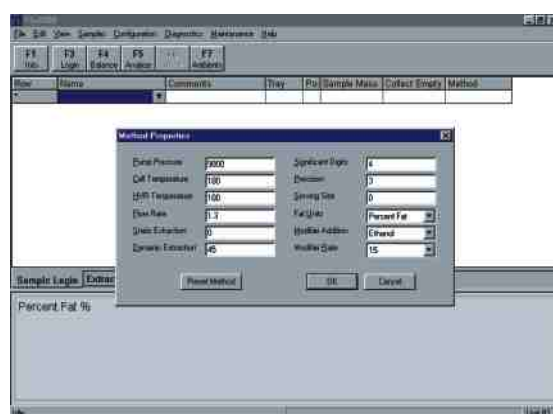


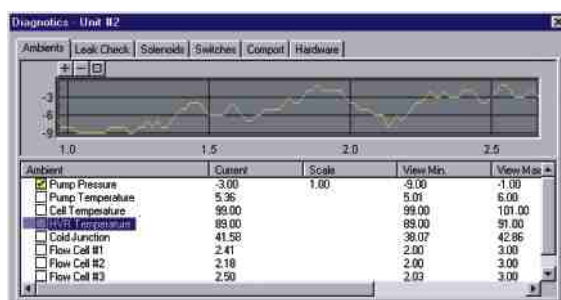
# Windows® -Based Software TFE2000



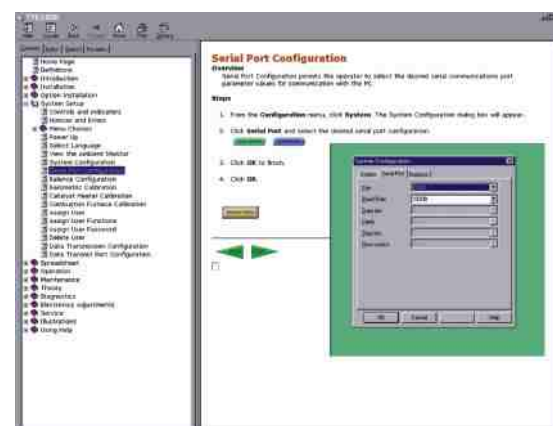
Easy-to-use instrument software prompts operator through each procedure step-by-step



Method parameters can be easily edited to suit your specific application



View live diagnostics and status of internal components



On-board help manual provides quick and easy access to relevant information



## LECO—Your source for total analytical solutions.

TGA701  
Thermogravimetric  
Analyzer



TruSpec™  
Elemental  
Determinators



LECO Corporation  
3000 Lakeview Avenue • St. Joseph, MI 49085-2396 • Phone: 800-292-6141 • Fax: 269-982-8977  
info@leco.com • www.leco.com • ISO-9001 • No. FM 24045 • LECO is a registered trademark of LECO Corporation.



LECO®  
Fat/Oil Determination

# TFE2000 Total Fat/Oil Determinator

## Your total solution for safe, accurate determination of fat and oil

LECO's TFE2000 uses Supercritical Fluid Extraction (SFE)—a simple, automated AOAC/AOCS-approved technique for safely and rapidly removing fats and oils from food, feed, and oilseed samples. SFE eliminates hazardous chemicals used in other solvent extraction methods such as Mojonnier/Roese-Gottlieb, Acid Hydrolysis, Soxhlet, Filter Bag Technology, and Microwave Digestion.

The unique design of the TFE2000 features three extraction thimbles, three automated Heated Variable Restrictors (HVRs), and three removable, directly weighable collection traps for greater throughput and efficiency. Precise calculations are determined based on the mass of the sample, as well as the mass of the collection vials before and after analysis.

The TFE2000 uses liquid CO<sub>2</sub> at elevated pressures and temperatures as the extraction medium. An optional M2000 module provides an ethanol/methanol modifier to the incoming CO<sub>2</sub> stream for improved extraction efficiency in certain applications.



### Thimble Holder

- Holds up to 2 g sample sizes
- No tools required



### Extraction Chamber

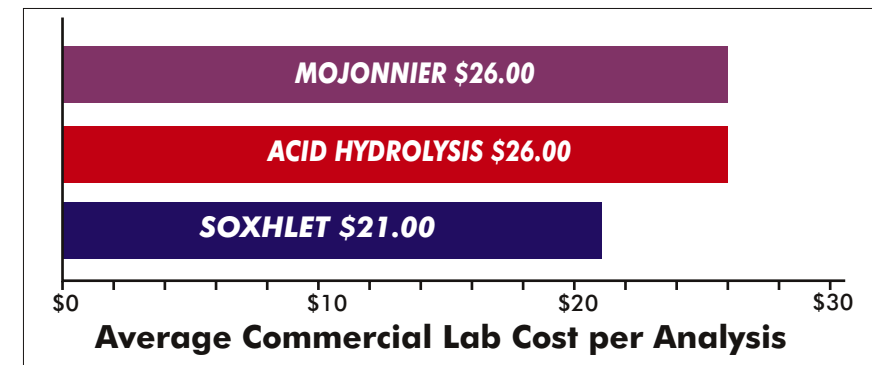
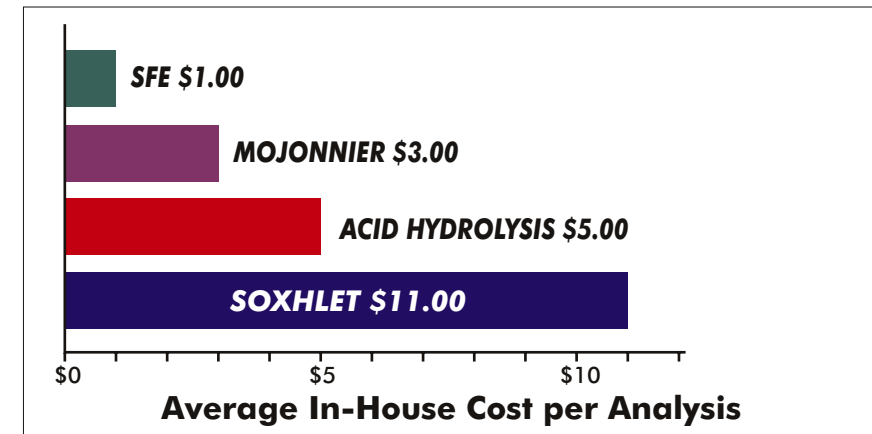
- Three parallel extraction chambers
- Automated thimble insertion
- Extraction temperatures of approximately 110°C



### Collection System

- HVRs ensure accurate CO<sub>2</sub> flow control
- Removable vials provide an efficient gravimetric determination of fat

## TFE2000 Cost Advantage



### M2000 Modifier Module

- Removes modifier from a standard 4-liter bottle and mixes it with CO<sub>2</sub> to boost extraction efficiency
- Optional for specific applications

### User Interface

- Your choice of Keypad or Windows®-based operation and multiple furnace control
- Link up to eight TFE2000 units for higher throughput

