

Date: June 13, 2002

No. 02-07



We are pleased to announce a special edition of the Olympus MicroSuite™ software, **MicroSuite™ SE**. This software, designed with economics in mind, will interface to and control the DP12 camera from a computer (Windows® 2000 & Windows® 98 SE Pentium III or higher, USB connection). View and capture images directly on a computer monitor! Now you have the flexibility of showing the DP12 as either a stand-alone camera or a camera capable of being interfaced to a computer with a live image on the monitor (via USB technology).

MicroSuite™ SE enhances the DP12's capabilities making it a more powerful camera, competitive with Diagnostic Instruments' Insight camera. By offering more pixels for image documentation and publication (3.2 Megapixels vs. the 1.9 of the Insight) and no cumbersome PCI cards, this bundle is a guaranteed winner!

The MicroSuite™ SE software includes the following features:

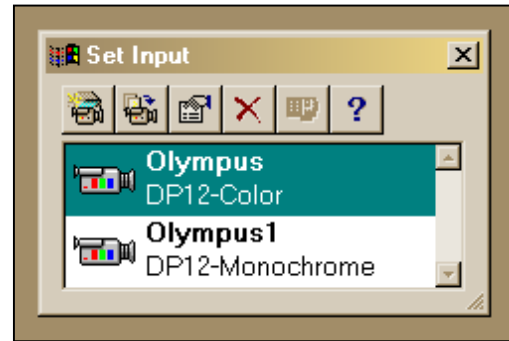
- Image acquisition – the ability to optimize image acquisition conditions while having fast and easy access to important camera control settings
- Basic image processing functions
- Movie (time-lapse) capabilities
- Simple interactive measurements that are exportable to Excel
- Database archiving
- Report generation

DP 12 Camera Control Button Bar

- Live image window on the computer monitor (320 x 240 resolution)
- Acquisition of images in standard, high quality, or super high quality mode
- Access to camera control dialog box
- Ability to toggle between computer control and handset control (USB button)



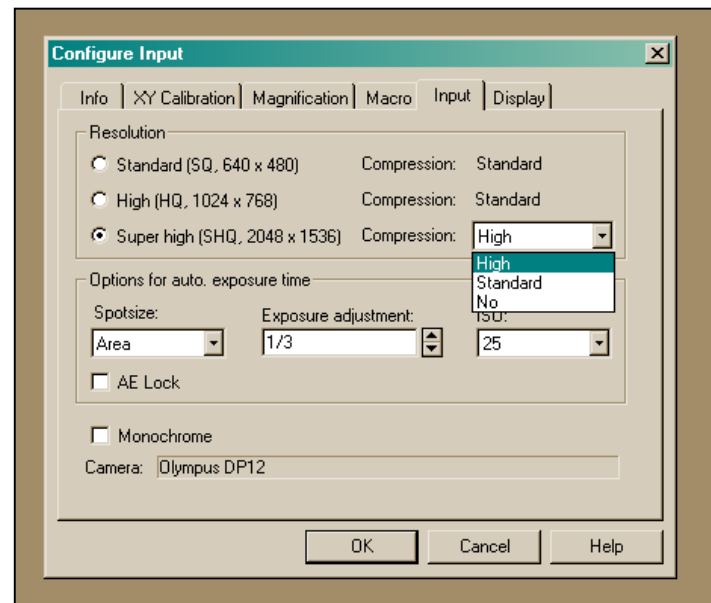
You have the option to set multiple input configurations, so you never have to use the handset control unit.



Additionally, you have the ability to customize each input channel using all the features available in the Configure Input dialog box.

Features include:

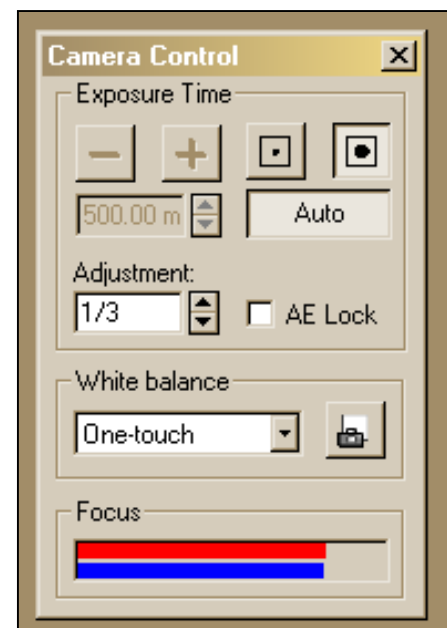
- Camera/microscope calibration
- 3 SHQ modes
- ISO & exposure settings
- Display orientations (erect & normal)
- Simple pre- & post-processing capabilities



The DP12 camera controls are accessible from the Camera Control dialog box.

Camera controls include:

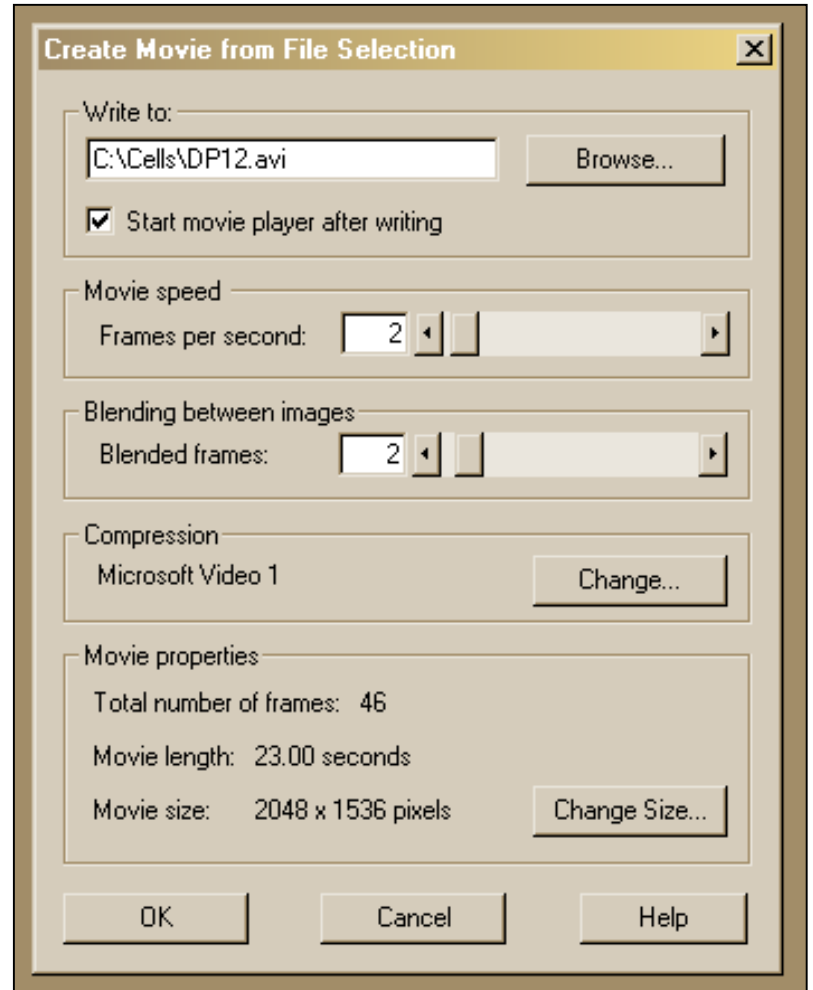
- Manual exposure (+/- 2 eV in 1/3 eV increments from 200 μ s to 8000 ms)
- Auto-exposure (200 μ s to 500 ms)
- Area & spot metering
- Auto-exposure (AE) lock
- White balance
- Focusing aid indicator





Now you can easily create a movie with the DP12!

- Acquire a series of images by setting the desired number of images and a time delay.
- Then, create an **avi** (audio video interleave) file by choosing the movie speed and blending the image frames.



The compression mode defaults to Microsoft Video 1, which can be viewed using Windows® Media Player.

There are several types of compression formats available. However, unlike a JPEG file, these compressions cannot be read universally by software programs. For example, a movie made in DivX 5.0 Codec cannot be read by a program using Microsoft Video 1 without first downloading an appropriate file from the DivX website.

