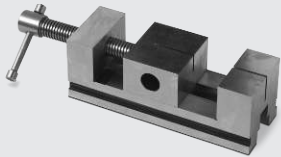


Sectioning Machine Accessories

Vises



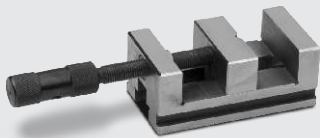
809-362 Vise

- Screw-type vise
- Slotted for holding small parts (fasteners)
- High-precision design
- 2.9-inch jaw opening
- 2.8 in. H x 7.9 in. W x 2.8 in. D
- Sized for MSX200/205



809-430 Vise

- 1.5-inch jaw opening
- 0.75-inch jaw height
- 2.5-inch jaw width
- Sized for MSX200/205
- 2.8 in. H x 4 in. W x 4 in. D
- Clamping fixture for burr-free sectioning



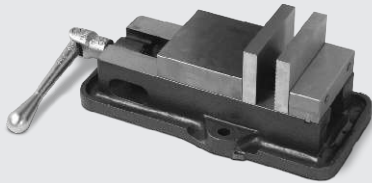
811-651-144 Vise

- 2.2-inch jaw opening
- 0.94-inch jaw height
- 2.3-inch jaw width
- 1.8 in. H x 4.6 in. W x 2.4 in. D
- Sized for MSX200/205



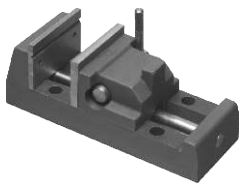
809-364 Vise

- Rugged construction
- Screw-type vise
- Sized for MSX250/255
- 3-inch jaw opening
- 3 in. H x 9.8 in. W x 5.1 in. D



809-365 Vise

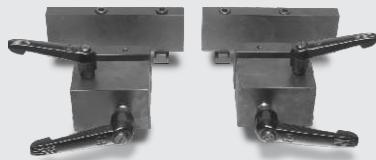
- Rugged construction
- Screw-type vise
- Sized for MSX300 and large cut-off machines
- 3.8-inch jaw opening
- 3.5 in. H x 12. in. W x 6.3 in. D



807-914 Cam-Lock Right Vise

807-915 Cam-Lock Left Vise

- Sized for MSX250/255, and CM-24
- 4-inch jaw opening

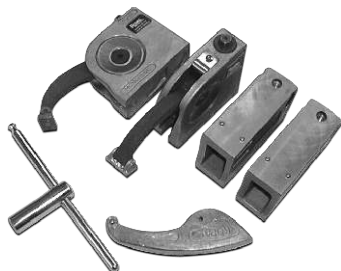


809-388 Table Vise

- Clamping area 3.9 in. x 2.5 in.
- Use with the MSX300

809-386 Quick Clamping Movable Table Vise

- Clamping area 2.3 in. x 1.9 in.
- Sized for MSX250/255



808-957 Clamping Fingers Kit

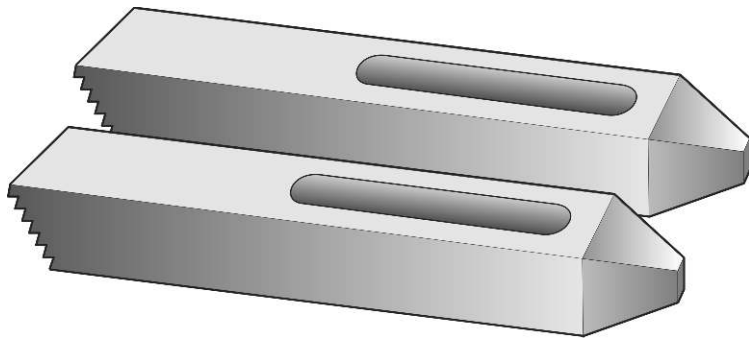
- Clamping fingers with two adjustable arms
- Sized for MSX250/255, 300, and 400/432 T-slotted tables

809-375 Clamping Fingers Kit

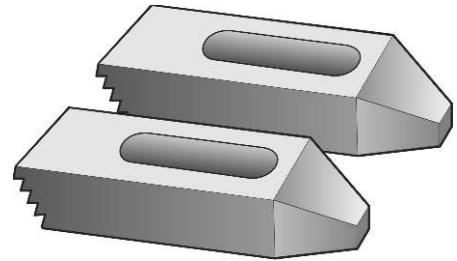
- Clamping fingers with two adjustable arms
- Sized for MSX200/255 T-slotted tables

Clamping Kit

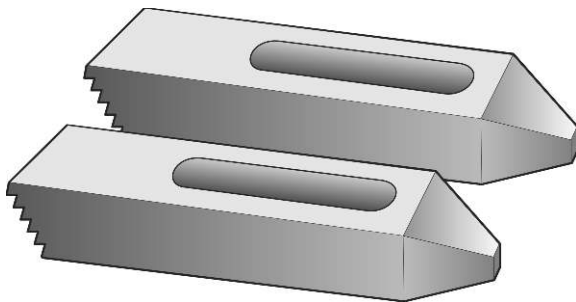
Clamping Kit (p/n 807-597) includes all components shown (quantities in parenthesis). Individual components can be purchased separately.



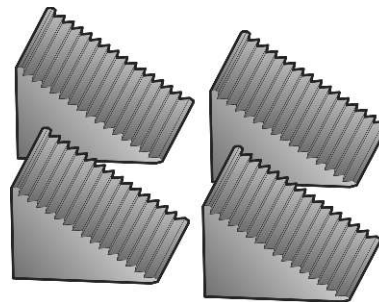
803-758 (2)
Step Clamp



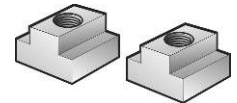
803-756 (2)
Step Clamp



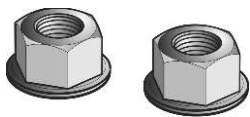
803-757 (2)
Step Clamp



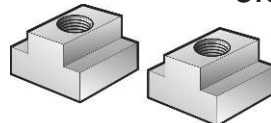
803-755 (4)
Step Block



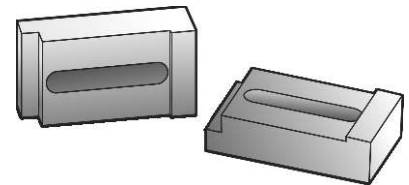
809-387 (4)
T-Slot Nuts for
MSX-200



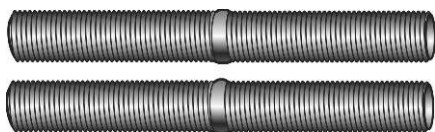
803-754 (4)
Hex Head Nut



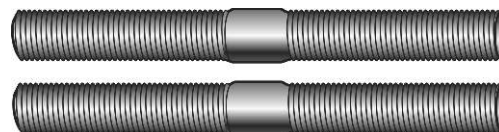
803-763 (4)
T-Slot Nuts



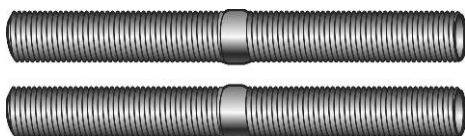
811-651-145 (2)
Clamps



803-759 (4)
Stud



803-761 (4)
Stud



803-760 (4)
Stud



803-762 (4)
Stud

Specifications and part numbers may change. Consult LECO for latest information.

3000 Lakeview Avenue • St. Joseph, MI 49085 • Phone: 800-292-6141 • Fax: 269-982-8977
info@leco.com • www.leco.com • ISO-9001:2000 • No. FM 24045 • LECO is a registered trademark of LECO Corporation.



Delivering the Right Results