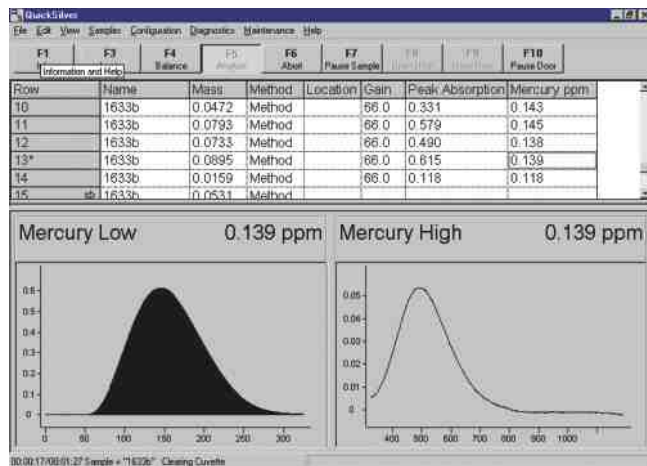
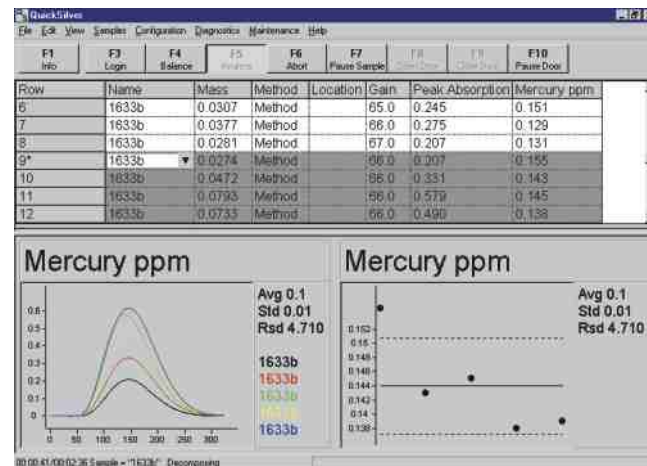


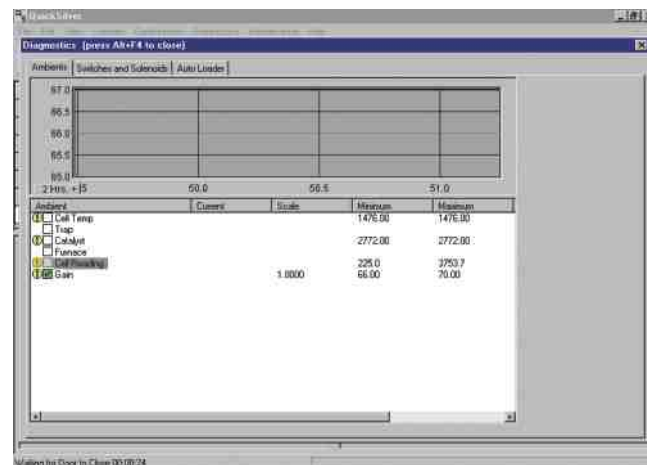
**Windows®-Based Software
AMA254—Quicksilver**



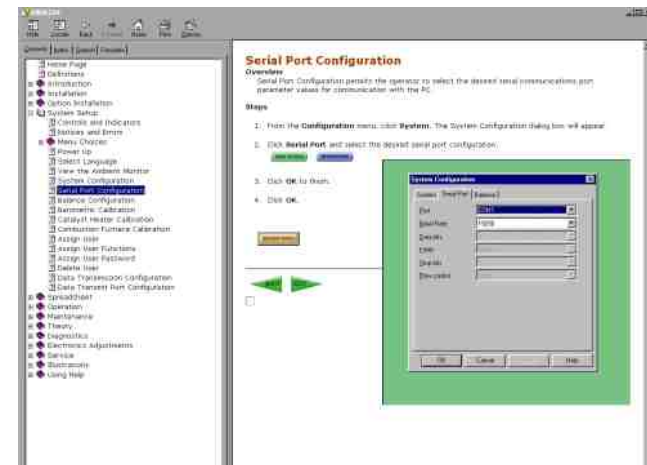
Standard interface incorporates data spreadsheets and sample plots.



Performs statistical analysis quickly.



Real-time diagnostics on internal components.



On-board help manuals provide relevant information quickly and easily.



LECO—Your source for total analytical solutions.

**TGA701
Thermogravimetric
Analyzer**



**SC-144DR
Sulfur/Carbon
Determinator**



3000 Lakeview Avenue • St. Joseph, MI 49085-2396 • Phone: 800-292-6141 • Fax: 269-982-8977
info@leco.com • www.leco.com • ISO-9001 • No. FM 24045 • LECO is a registered trademark of LECO Corporation.



**LECO®
AMA254 Mercury Analysis**

AMA254 Mercury Analyzer

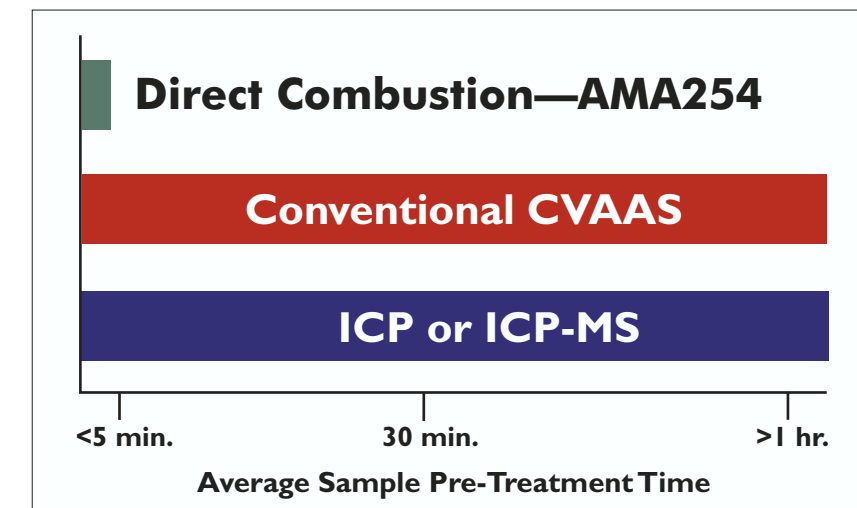
Your total solution for fast, safe, and accurate mercury determination.

LECO's AMA254 determines trace amounts of mercury in various materials—including coal, combustion residues, soils, and other solid/liquid samples.

The AMA254 technique of direct combustion features a combustion/catalyst tube that decomposes the sample in an oxygen-rich environment and removes interfering elements. A gold amalgamator trap collects all mercury from the evolved gases and a dual-path length cuvette/spectrophotometer specifically determines mercury over a wide dynamic range.

With recent method approvals by the EPA and ASTM, the AMA254 offers a fast, cost-effective alternative to conventional CVAAS or ICP. This unique system combusts various matrices without sample pre-treatment or concentration spikes—saving you valuable time. The instrument requires no hazardous chemicals, providing a mercury determination in less than five minutes.

AMA254 Time Advantage



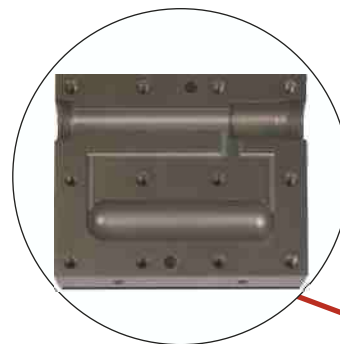
Amalgamator

- Traps all mercury vapor on a gold-plated ceramic tube
- Doses the mercury to the cuvette system through flash heating



Cuvette System

- Detection system based on a standard atomic absorption spectrophotometer at a specific wavelength (253.7 nm)
- Dual-path length cuvette expands the dynamic range from the sub-ppb level to upper ppm level

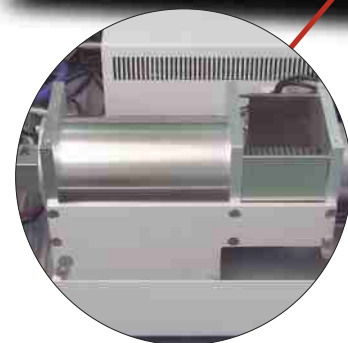
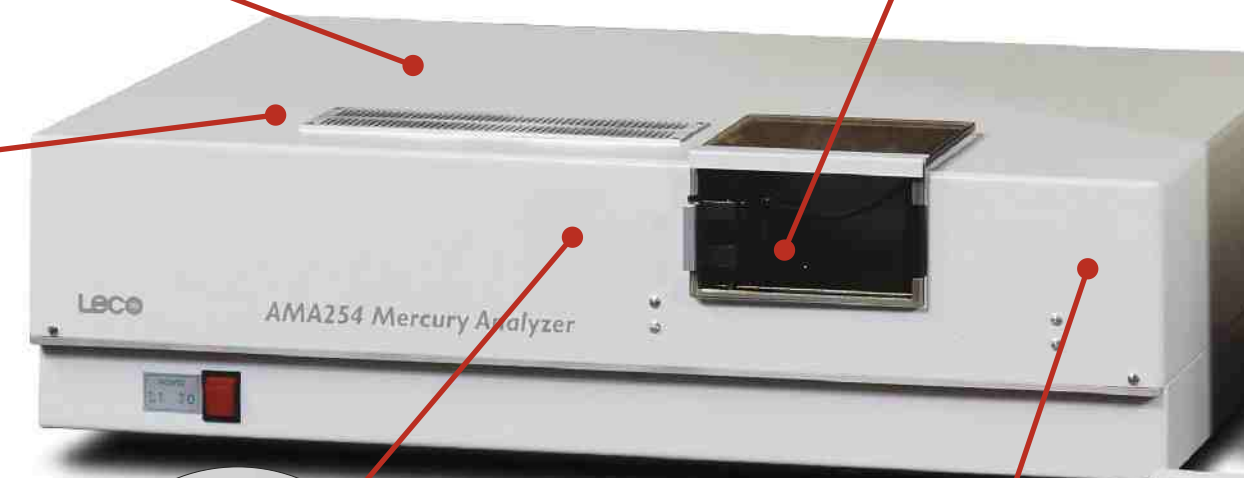


Sample Boats

- Nickel boats hold up to 500 mg of various samples

User Interface

- Windows®-based operating software (**Quicksilver**)
- Optional balance interface



Combustion/Catalyst Tube

- Combustion in an oxygen-rich environment (~750° C)



Autoloader

- Rotating carousel holds up to 45 nickel sample boats
- Boats are automatically inserted into the combustion/catalyst tube

